

Gland, February 2018

## To our donors, sponsors, supporters and members

Dear Friends,

Regularly, we send you news about the highlights of our Association.

Given the current situation of the hospital, we decided to share with you our concerns about the future of the Magbenteh Community Hospital (MCH).

We need your help. The situation is critical but, thanks to you, it's not desperate.

Any help is welcome. We thank you in advance for your support.

### The current situation

The Ebola crises in 2015 threw the Sierra Leone economy into shambles with large parts of the economy grinding to a halt. This came as the economy was just starting to recover following the civil war

As a result, Government grants declined from 59% in 2016 and again from 57% in 2017. Several foreign companies have left the country, causing a significant decline in revenues from paying patients (46% in three years). That's why, since 2015, the hospital's revenues have decreased by 22% each year.



**The estimates for 2018 are alarming:** Without government subsidies and sufficient donations, the hospital management must reduce its staff, which will result in the refoulement of many patients at the doors of the hospital. For the moment, we estimate that we can only cover 10% of the budgeted annual costs. Most diseases can no longer be treated (pre / postnatal complications, malformations, infectious diseases) and the program set up "Children under 5 years" can unfortunately no longer be pursued (more than 5'000 children directly affected).

**Without your help, the very existence of the hospital is in jeopardy.**

That's why we need every possible support for the hospital to continue to exist and save lives. **It's urgent !**



Harald Pfeiffer and team



Inspector of Schools

Therapeutic Feeding Centre

Goodbye to Dr Genevieve

Visitors from San Pablo University

January in Numbers

# January 2018 Newsletter







# SWISS-SIERRA LEONE DEVELOPMENT FOUNDATION

JANUARY 2018

## Inspector of Schools

---

Magbenteh Community Boarding School reopened for the second term of the 2017/2018 academic year on 8th January 2018. The Inspector of Schools for Bombali District from the Ministry of Education, Science and Technology visited and reported afterwards that we were top out of 160 schools in the area for student and staff attendance. He wrote a comment in the school's visitors book: *"Alex Kanu MEST Officer visited the school today to check on the attendances of both teachers and pupils on the day of reopening the school. The attendances of teachers and pupils was discovered to be extremely encouraging. The administration of the head teacher is rather excellent and well managed."*



## Therapeutic Feeding Centre

---

January saw a visit from the District Nutritionist from the Food and Nutrition Department for the Ministry of Health and Sanitation at Magbenteh Community Hospital, who donated a range of cooking items to help restart our Therapeutic Feeding Centre.

The District Nutritionist also confirmed we would receive a supply of RUTF peanut paste in association with the World Food Programme (WFP) alongside a 1-day training for our Children's Ward and Under- Fives Clinic staff, in alignment with the Government.

Currently there is only 1 Therapeutic Feeding Centre in Bombali District. Therefore, reopening the service at Magbenteh Community Hospital will greatly benefit the youngest population in Sierra Leone.



Malnutrition rates in Sierra Leone are among some of the highest in the world. According to the World Health Organisation, 45% of child deaths are related to malnutrition. Magbenteh Community Hospital established a Stabilization Centre in 2012 which served the communities of Bombali District until the Ebola epidemic in 2014 which currently remains closed, until funding is secured. With this kind donation from the District Nutrition, we are now able to plan for a closer reopening.

## Goodbye to Dr Genevieve

---

After volunteering for 1 year at Magbenteh Community Hospital, we said a fond farewell to Dr Genevieve. The staff organised a gathering with speeches, music and food, sharing their memories with their fellow employees. Dr Genevieve has been a true blessing to the medical service provided to the 14,000 in and out patients treated at the hospital during 2017. Her dedication and commitment impacted each and every department, especially the Community Health Officers and Children's Ward with whom she helped manage critical cases and educate on ETAT training and diagnostics. SSLDF wish Dr Genevieve the best of luck in her next adventure. She shares some of her thoughts with us:

*"Magbenteh Community Hospital is a very unique place...The cases I saw during my year ranged from infectious diseases such as malaria, tuberculosis and HIV to snake bites, tetanus and leprosy. It was a dynamic learning experience-not only would I spend afternoons teaching the staff but they would also teach me. I learnt about illness I had never encountered, about the health systems in place and also how to speak Krio..."*

*Despite the challenges I faced over the 12 months at Magbenteh I immensely enjoyed my time. I don't think I have ever laughed so much as I did some of the days spent with the nursing staff; in the face of adversity one learns that it's the little things that bring delight. I have no doubt that some of the relationships I formed here will last a lifetime. I was made to feel a part of the family and for that I am eternally grateful."*



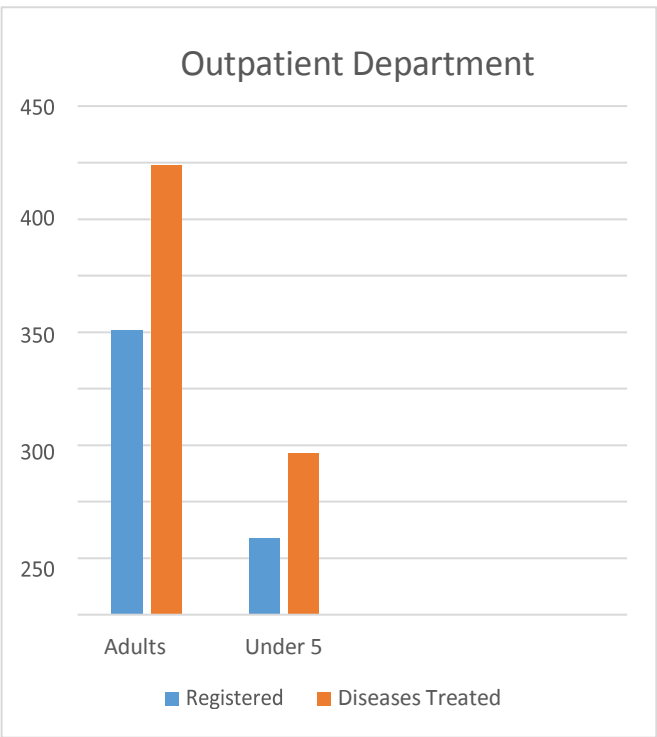
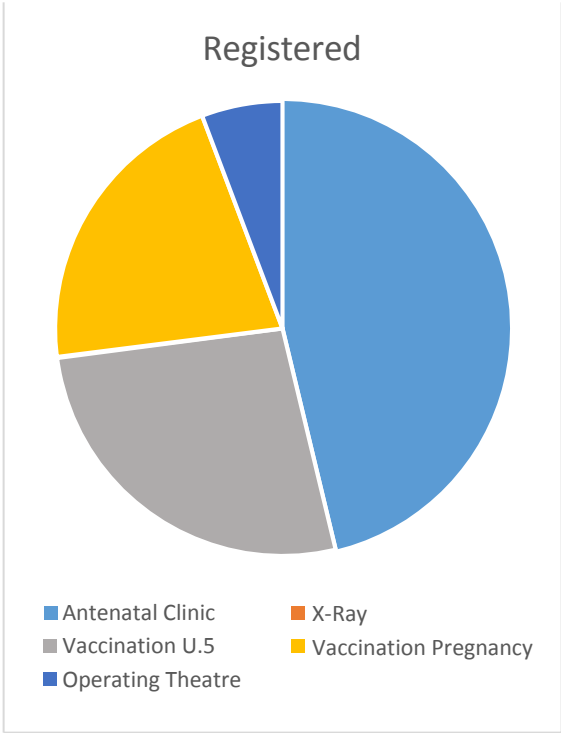
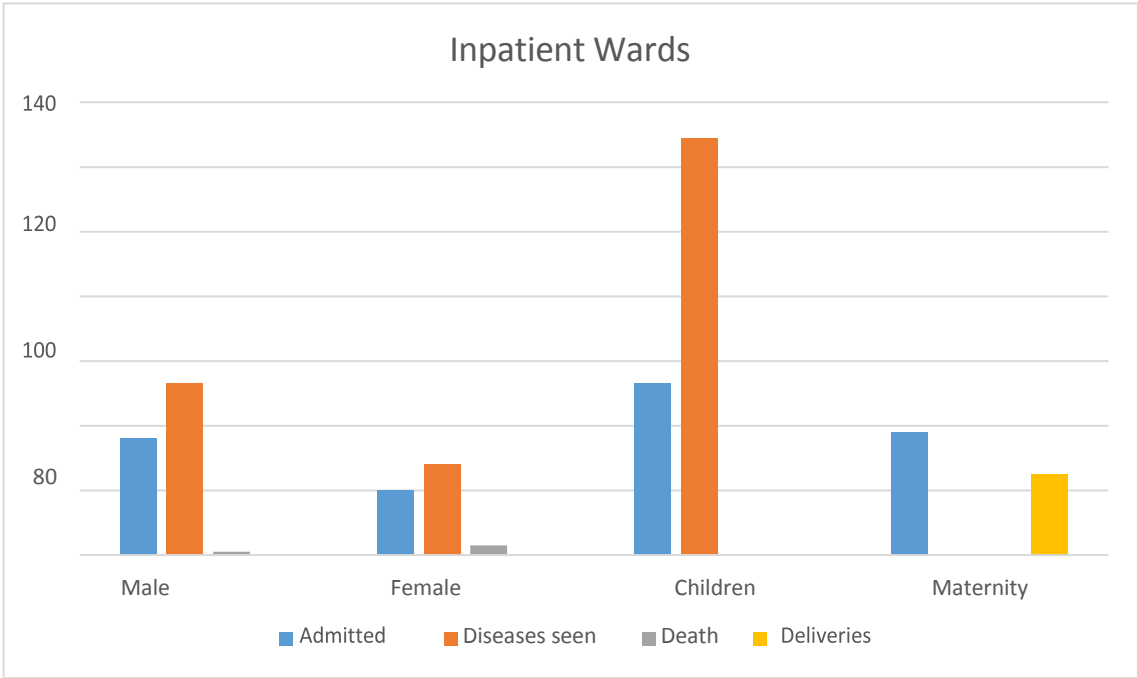
## Visitors from CEU San Pablo University

---



In the middle of January SSLDF welcomed a group of 15 Professors and Masters students from CEU San Pablo University, Spain. The group received a full tour of the hospital facility and met with members of each department depending on their specialty. Subsequently, a meeting was held to discuss the possibility of a collaboration between the two associations, especially in regards to securing a medical supply to Magbenteh Community Hospital. It was a pleasure to share our work with them

January in Numbers



**Children’s Ward:** 0 deaths occurred.

**Male Ward:** 1 death occurred due to HIV.

**Female Ward:** 3 deaths occurred due to Hepatitis B and HIV.

**Maternity Ward:** The balance of 13 expectant mothers admitted were treated for 7 clinical malaria; 3 pelvic inflammatory disease; 1 haemorrhage antepartum; pre-eclampsia and 2 abortions.

**Laboratory:** Of the 4,271 Laboratory tests carried out during the month of January, 2280 were rapid tests for malaria (1530 positive, 750 negative). 1,458 of the 4,271 Laboratory tests were for Typhoid fever (800 positive, 628 negative.)



## Ways to Donate

---

**All donations, big or small, are always welcome.** We appreciate all gestures which will allow our action in Sierra Leone to succeed.

We accept donations in several currencies.  
In Switzerland, the donations are tax deductible.

### For bank transfers:

Beneficiary: Action Swiss Sierra Leone  
Bank: UBS SA, 1260 Nyon, Suisse. CCP 80-2-2  
BIC (Swift): UBSWCHZH80A

### For the hospital:

IBAN for donations in **CHF**: CH30 0022 8228 5536 2701J  
IBAN for donations in **EUR**: CH84 0022 8228 5536 2761V  
IBAN for donations in **USD**: CH53 0022 8228 5536 2760A

### For the Friends of the Magbenteh Community Hospital

Would you like to become a Friend of the Magbenteh Community Hospital?  
Visit our website : [www.assl-ch.org](http://www.assl-ch.org)

Set up a standing order with your bank:

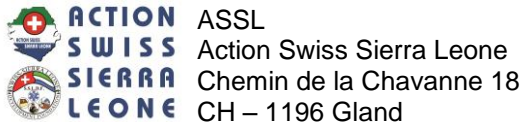
IBAN: CH41 0022 8228 5536 27M3 U  
Account «Amis de l'Hôpital MCH»  
Monthly standing order of CHF 50.00

### For the school sponsorship:

IBAN for donations in **CHF**: CH30 0022 8228 5536 27M1k  
Don't forget to specify which area you would like to donate to:

- Hospital
- Orphanage/Boarding School
- Maternity Ward
- Children under 5
- Children

A big thank you to your generosity. Thanks to your contribution, we can continue our action in Sierra Leone and therefore, support the most in need.



Tel : +41 22 364 27 93  
Direction : [info@assl-ch.org](mailto:info@assl-ch.org)  
Sponsorship : [parrainage@assl-ch.org](mailto:parrainage@assl-ch.org)